



# NORTHBROOK SCHOOL DISTRICT 27

Office of the Superintendent

Board of Education  
Dr. Michael Ginsburg, President  
Mrs. Sally Lane, Vice President  
Mr. Ed Feld  
Mr. Al Mazewski  
Mr. David Nadig  
Ms. Debbie Rabishaw  
Dr. Jennifer Warner

## Fall 2008 Enrollment Report

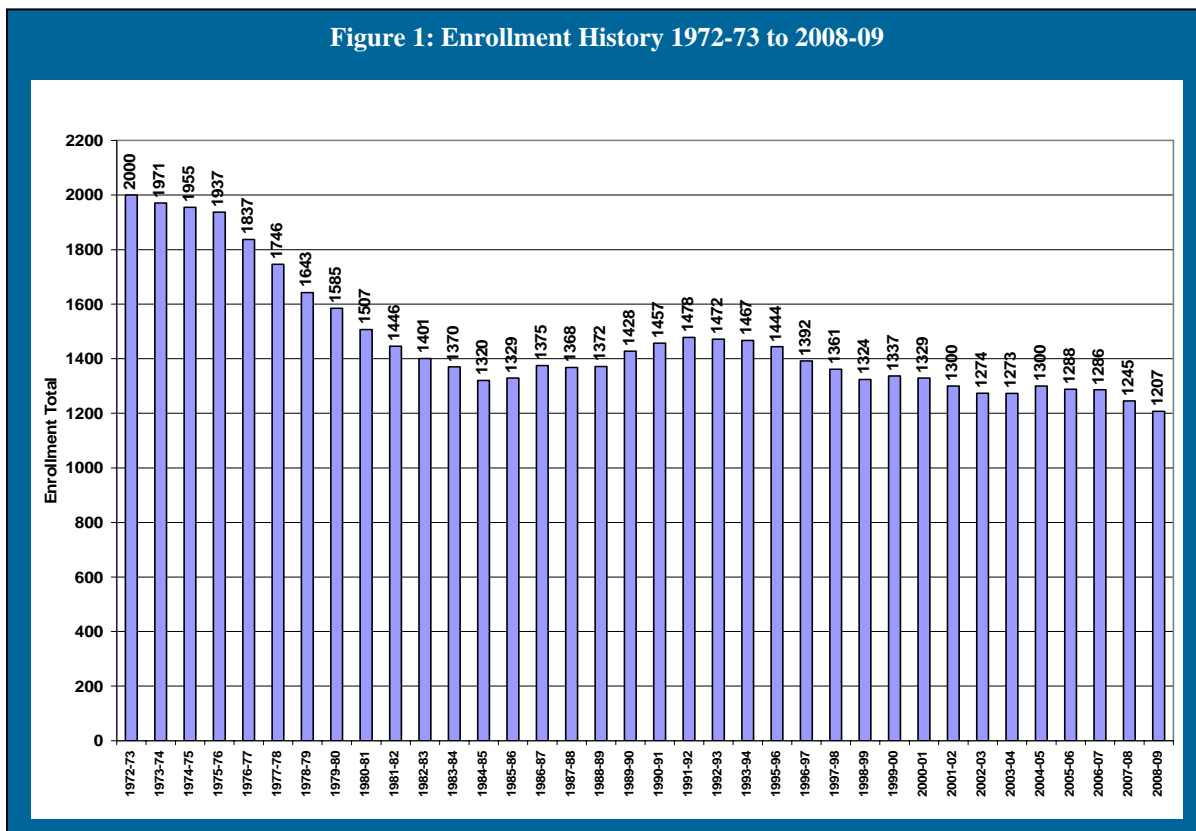
by

David J. Kroeze, Superintendent of Schools

In this report I have provided a summary of our grade level enrollment data and compared it with prior year enrollments. I have also provided some analysis regarding our trends and future enrollment expectations.

### History of Enrollment Patterns

- In the past 10 years the overall District enrollment has declined by 130 students with some variation from year to year. In the 1999-00 school year our enrollment was 1,337. Our current enrollment for 2008-09 is 1,207 students. Figure 1 demonstrates the pattern of enrollment over the past 36 years. It reflects an overall decline from a peak of 2000 students in 1972-73.



- This year we experienced a decrease of 38 students from the 2007-08 school year. Over the past two years, this is a decline of 79 students. We believe there are at least three reasons for this decline. First, we typically maintain our enrollment or grow slightly during the year; however, over the course of last year our enrollment declined 6 students (22 over two years). Second, our kindergarten enrollment was below 120 for the fourth consecutive year as well as six out of the past eight years (See Figure 3 below). Finally, the downturn in the housing market has resulted in fewer new students to the District than in the past. Figure 2 below addresses this decline.

### **Enrollment Comparisons by School for 2007 and 2008**

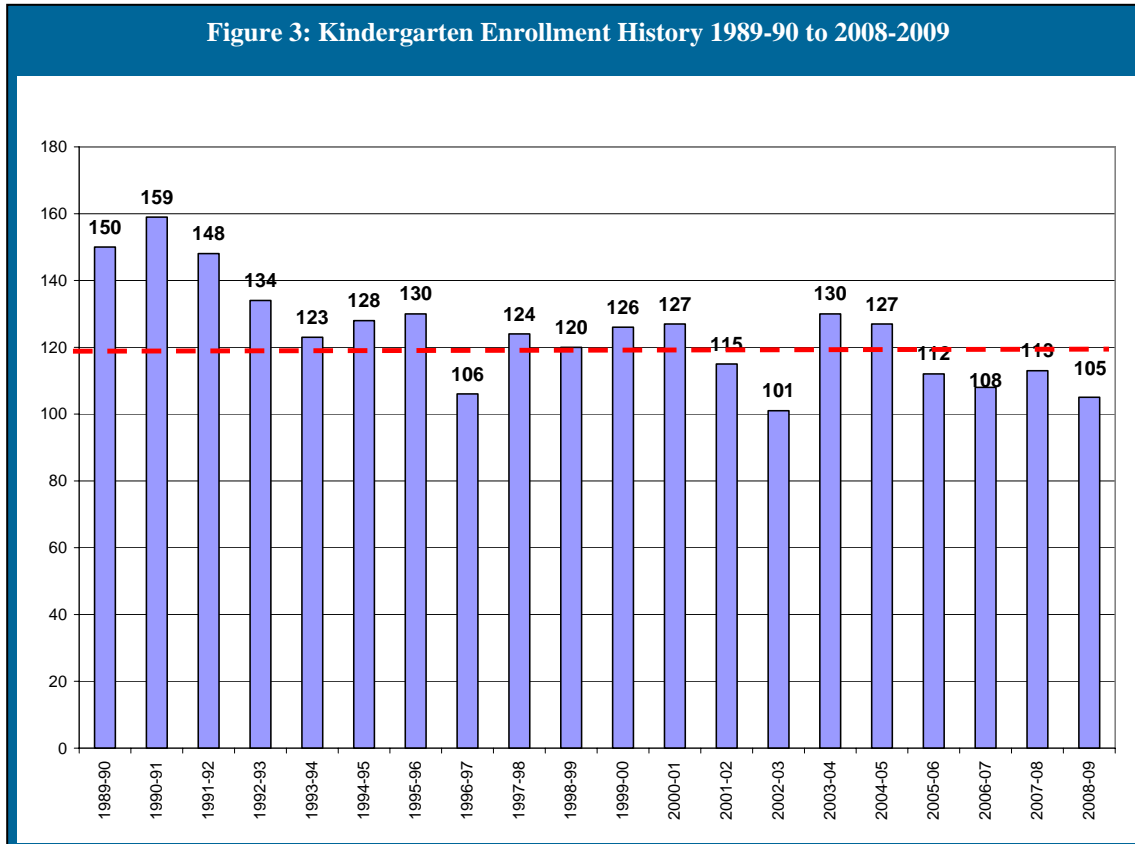
- Figure 2 indicates that all of the schools have declined enrollments compared with last year and Grove has dropped below 200. Class sizes are well-balanced in keeping with our class size commitment.

| <b>Figure 2</b>                           |              |   |                                  |   |                                  |
|---|--------------|---|----------------------------------|---|----------------------------------|
| <b>Enrollment Figures for Fall 2007</b>   |              |   |                                  |   |                                  |
| <b>School</b>                             | <b>Grade</b> | <b>2007-2008 Actual Fall Enrollment</b> | <b>New Students in Fall 2007</b> | <b>2008-2009 Actual Fall Enrollment</b> | <b>New Students in Fall 2008</b> |
| <b>Grove</b>                              | KDG          | 34 (2)                                  | 10                               | 46 (3)                                  | 22                               |
|   | First        | 54 (3)                                  | 6                                | 47 (3)                                  | 13                               |
|   | Second       | 42 (2)                                  | 1                                | 53 (3)                                  | 1                                |
|   | Third        | 70 (4)                                  | 6                                | 43 (2)                                  | 2                                |
|   | <b>Total</b> | <b>200</b>                              | <b>23</b>                        | <b>189</b>                              | <b>38</b>                        |
| <b>Hickory Point</b>                      | KDG          | 79 (4)                                  | 30                               | 59 (4)                                  | 17                               |
|   | First        | 66 (4)                                  | 8                                | 80 (5)                                  | 4                                |
|   | Second       | 80 (4)                                  | 5                                | 67 (4)                                  | 4                                |
|   | Third        | 71 (4)                                  | 0                                | 73 (4)                                  | 1                                |
|   | NSSSED       | 6                                       |                                  | 8                                       |                                  |
| <b>Total</b>                              | <b>302</b>   | <b>43</b>                               | <b>287</b>                       | <b>26</b>                               |                                  |
| <b>Shabonee</b>                           | Fourth       | 152 (7)                                 | 4                                | 142 (7)                                 | 5                                |
|   | Fifth        | 126 (6)                                 | 2                                | 156 (7)                                 | 5                                |
|   | <b>Total</b> | <b>278</b>                              | <b>6</b>                         | <b>298</b>                              | <b>10</b>                        |
| <b>Wood Oaks</b>                          | Sixth        | 157                                     | 8                                | 126                                     | 2                                |
|   | Seventh      | 157                                     | 3                                | 150                                     | 5                                |
|   | Eighth       | 151                                     | 1                                | 157                                     | 6                                |
| <b>Total</b>                              | <b>465</b>   | <b>12</b>                               | <b>433</b>                       | <b>13</b>                               |                                  |
| <b>District Totals</b>                    |              | <b>1,245</b>                            | <b>84</b>                        | <b>1,207</b>                            | <b>87</b>                        |
| <b>End of Year Enrollment for 2007-08</b> |              | <b>1,239</b>                            |                                  |   |                                  |

Note: The () indicates the number of class sections per grade level.

### Kindergarten Enrollment Pattern

- Our kindergarten enrollment is showing a declining trend. Figure 3 presents the kindergarten enrollment for the past 20 years. Up through 2000-01 we had only one year where the enrollment was less than 120 students. Six of our past eight years have been below 120 students. We need to monitor our kindergarten enrollment over the next few years to determine if this pattern changes.



### New Student Move-Ins

- We continue to have new students move into the District as indicated in Figure 4. Up to 2006-07 we typically enrolled approximately 100 students each year with most of them entering the primary grades. However, for the past two years we enrolled fewer than 100 students (84 and 87 respectively). While the overall number of new students has declined, primary students make up the majority. This year only 13 of our new students are in grades 6-8. This high number of new students in the lower grades should have a positive long-term impact on the District's enrollment provided that they remain in the district and we continue to see within-grade-growth.

| <b>Figure 4</b>   |            |            |            |              |
|---|------------|------------|------------|--------------|
| <b>Number of New Students to District 27 in the Past Six School years</b> |            |            |            |              |
| <b>Year</b>   | <b>K-3</b> | <b>4-5</b> | <b>6-8</b> | <b>Total</b> |
| <b>2003-04</b>  | 79         | 10         | 22         | 111          |
| <b>2004-05</b>  | 57         | 15         | 25         | 97           |
| <b>2005-06</b>  | 67         | 17         | 13         | 97           |
| <b>2006-07</b>  | 79         | 11         | 10         | 100          |
| <b>2007-08</b>  | 66         | 6          | 12         | 84           |
| <b>2008-09</b>  | 64         | 10         | 13         | 87           |

**Revised Enrollment Projections**

- Given the fact that we lost students over the course of the last two years and the continued low kindergarten enrollment, we thought it would be helpful to revise our enrollment projections. We re-calculated the within-grade-growth factors given the changes to our enrollment this year and used these new factors to yield our projections.

| <b>Figure 5</b>                     |          |          |          |          |          |          |          |          |          |             |               |
|-------------------------------------|----------|----------|----------|----------|----------|----------|----------|----------|----------|-------------|---------------|
| <b>Projected Enrollment 2009-10</b> |          |          |          |          |          |          |          |          |          |             |               |
| <b>School</b>                       | <b>K</b> | <b>1</b> | <b>2</b> | <b>3</b> | <b>4</b> | <b>5</b> | <b>6</b> | <b>7</b> | <b>8</b> | <b>Misc</b> | <b>Totals</b> |
| GR                                  | 51       | 54       | 47       | 55       |          |          |          |          |          |             | 207           |
| HP                                  | 64       | 62       | 85       | 67       |          |          |          |          |          | 8           | 286           |
| SH                                  |          |          |          |          | 118      | 144      |          |          |          |             | 262           |
| WO                                  |          |          |          |          |          |          | 163      | 127      | 149      |             | 439           |
| <b>Totals</b>                       | 115      | 116      | 132      | 122      | 118      | 144      | 163      | 127      | 149      | 8           | 1,194         |
| <b>Projected Enrollment 2010-11</b> |          |          |          |          |          |          |          |          |          |             |               |
| <b>School</b>                       | <b>K</b> | <b>1</b> | <b>2</b> | <b>3</b> | <b>4</b> | <b>5</b> | <b>6</b> | <b>7</b> | <b>8</b> | <b>Misc</b> | <b>Totals</b> |
| HP                                  | 115      | 127      | 65       |          |          |          |          |          |          | 8           | 315           |
| SH                                  |          |          | 54       | 134      | 124      | 120      |          |          |          |             | 432           |
| WO                                  |          |          |          |          |          |          | 151      | 164      | 126      |             | 441           |
| <b>Totals</b>                       | 115      | 127      | 119      | 134      | 124      | 120      | 151      | 164      | 126      | 8           | 1,188         |
| <b>Projected Enrollment 2011-12</b> |          |          |          |          |          |          |          |          |          |             |               |
| <b>School</b>                       | <b>K</b> | <b>1</b> | <b>2</b> | <b>3</b> | <b>4</b> | <b>5</b> | <b>6</b> | <b>7</b> | <b>8</b> | <b>Misc</b> | <b>Totals</b> |
| HP                                  | 115      | 127      | 132      |          |          |          |          |          |          | 8           | 382           |
| SH                                  |          |          |          | 121      | 137      | 126      |          |          |          |             | 384           |
| WO                                  |          |          |          |          |          |          | 126      | 152      | 163      |             | 441           |
| <b>Totals</b>                       | 115      | 127      | 132      | 121      | 137      | 126      | 126      | 152      | 163      | 8           | 1,207         |
| <b>Projected Enrollment 2012-13</b> |          |          |          |          |          |          |          |          |          |             |               |
| <b>School</b>                       | <b>K</b> | <b>1</b> | <b>2</b> | <b>3</b> | <b>4</b> | <b>5</b> | <b>6</b> | <b>7</b> | <b>8</b> | <b>Misc</b> | <b>Totals</b> |
| HP                                  | 115      | 127      | 132      |          |          |          |          |          |          | 8           | 382           |
| SH                                  |          |          |          | 135      | 123      | 139      |          |          |          |             | 397           |
| WO                                  |          |          |          |          |          |          | 132      | 127      | 151      |             | 410           |
| <b>Totals</b>                       | 115      | 127      | 132      | 135      | 123      | 139      | 132      | 127      | 151      | 8           | 1,189         |

| Figure 6   |       |               |          |           |       |
|--|-------|---------------|----------|-----------|-------|
| Summary K-8 Enrollment Projections by School – Year Totals |       |               |          |           |       |
| School Year  | Grove | Hickory Point | Shabonee | Wood Oaks |       |
| 2008-09  | 189   | 287           | 298      | 433       | 1,207 |
| 2009-10  | 207   | 286           | 262      | 439       | 1,194 |
| 2010-11  |       | 315           | 432      | 441       | 1,188 |
| 2011-12  |       | 382           | 384      | 441       | 1,207 |
| 2012-13  |       | 382           | 397      | 410       | 1,189 |

### Summary

- The enrollment trend has been a decline over the past 10 years. This is consistent with our projections. This year we experienced another significant decline which we attribute to the slow housing market, a loss of 6 students during the course of last year, and a lower than expected kindergarten enrollment.
- We have consistently found that when our kindergarten enrollments stabilize at 120 or higher, the overall enrollment of the District remains relatively stable. We have experienced four consecutive years of kindergarten enrollment of less than 120. This consistent declining trend has led us to project future kindergartens at 115 students.
- We expect the housing market to improve over the next two years. With normal sales, we will continue to anticipate future enrollments to stabilize. Some of our older communities may experience higher than normal turnover if empty nesters sell their homes (e.g. 20-30 years). We will monitor this each year.
- Hickory Point and Grove enrollments continue to reflect a 100 student difference as we projected.
- We continue to experience an influx of new students in the District with 87 new students this year. This number is below 100 for the second consecutive year which we attribute to the housing market. These students will participate in our *New Student Assimilation Process* which identifies specific student instructional and social/emotional needs and provides for appropriate intervention and support.
- Given our current, conservative projections, we expect the overall enrollment of the District to continue to decline for at least one more year and then stabilize between (approximately) 1,190 and 1,210 students.